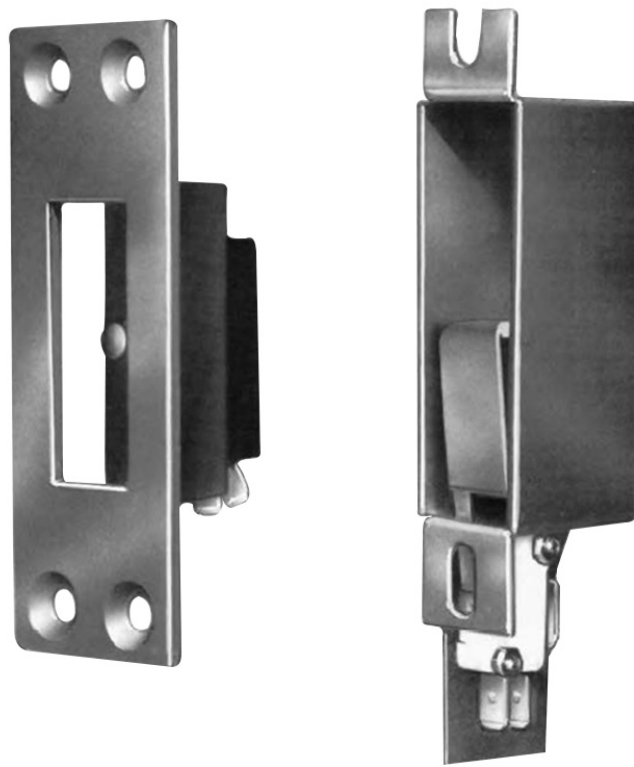


Keeper Switches



Folger Adam



For More information please call 210-533-1231

Mechanical Locks

Keeper Switches



Description

Electrical indication switches monitor the locked or unlocked condition of a door.

Applications

Specify for use with any mechanical lock. The switch installs behind the keeper or strike, and provides indication of door status to a remote control console.

NOTE: Used alone, this switch may be made to create a false signal by depressing the switch button manually. The possibility of a false signal should be eliminated by installing a door position switch and wiring it in series with the indication switch. In this application, a secure signal can be produced only after three conditions have been met:

- 1) the indication switch button is depressed.
- 2) the lockbolt is extended.
- 3) the door is closed.

Model Available

Model No.	Description
10-40BL	10 Series deadlocks
30-4BL	30/30D Series Deadbolt
60-4BL	60 Series Deadlock
70-4BL	70 Series Deadlatches
80-4BL	80 Series Deadlocks
3S-4BL	3800 Series Cremone Headbolts
ASSW-104A	9300 Series

Electrical Specifications

Switch Type	Rating
Single-pole, Double-throw (SPDT)	15 amps @ 125 , 250 VAC .5 amp @ 125 VDC .25 amp @ 250 VDC