



10105 HEAD OR FOOT BOLT 10105R FOOT BOLT RECEPTACLE



10105 HEAD OR FOOT BOLT

Applications

For the inactive leaf of pairs of swinging hollow metal, grating or steel plate doors.

Function

Actuated by means of a "spanner" type key which extends the bolt into appropriate receptacle in the floor or jamb head. A special foot bolt receptacle is available for floor installations.

Technical Data

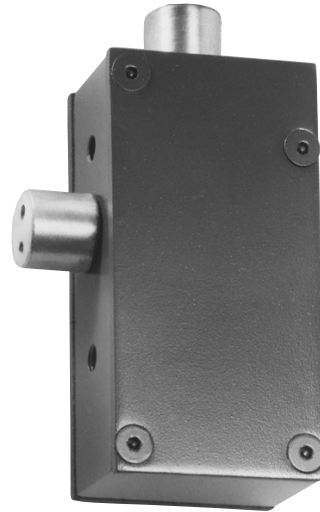
- STANDARD FINISH: Galvanized
- COVER: Cold-rolled steel plate
- CASE: Ductile iron
- LOCK BOLT: Cold-rolled steel
- SPANNER KEY: Cold-rolled steel
- SIZE: 5-3/8" H x 2-3/4" W x 1-7/8" TK
- WEIGHT: 5.5 lbs.
- BOLT SIZE: 1" Diameter
- BOLT THROW: 3/4"

10105R FLOOR RECEPTACLE

- SIZE: 3" H x 1-5/8" DIA x 1-5/8" sq. Base
- WEIGHT: 2.25 lbs.

Options

- HEAD BOLT KEEPER –
Specify: "10105B" x USP
- HEAD BOLT KEEPER SWITCH –
Specify: "10105CL" x USP
- FOOT BOLT RECEPTACLE –
Specify: 10105R



1010 Head or Foot Bolt

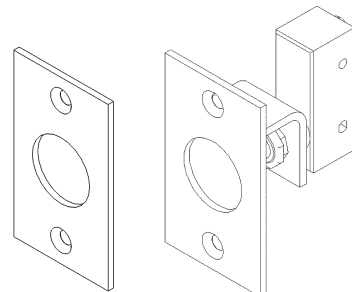
Note: Shown with cover plates used only with grating and plate doors



10105R Foot Bolt Receptacle



10105K Key



10105B

10105CL



Detention Equipment Company

For more information, please call 210.533.1231.
For Technical Service call 800.477.5537.