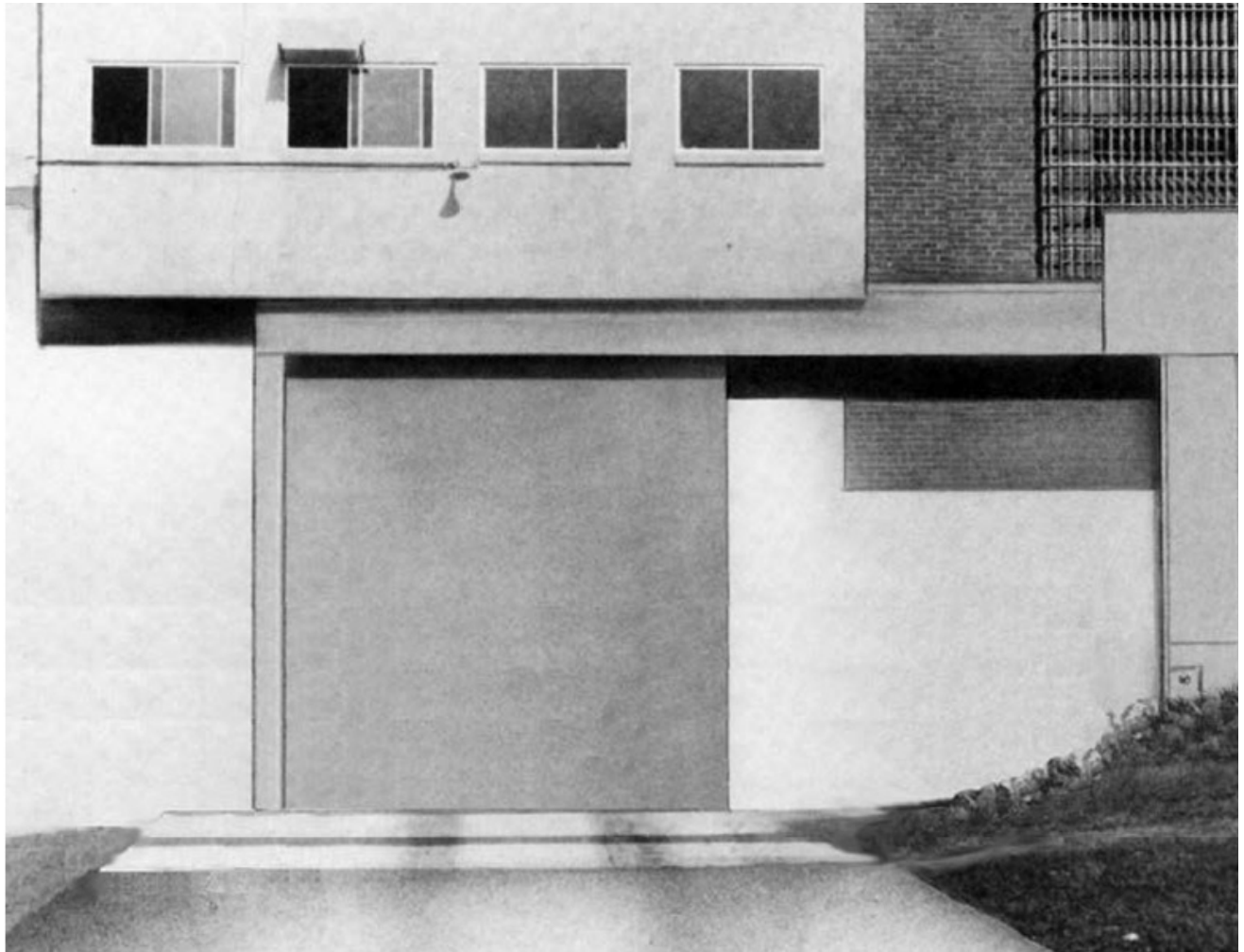


G Operators Sliding Fence Gate



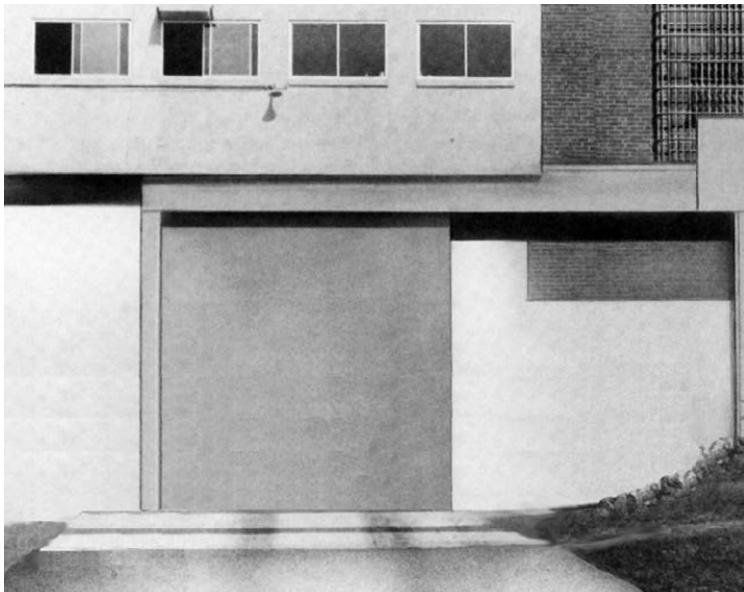
Folger Adam



For More information please call 210-533-1231

Locking Devices

G Operators Sliding Fence Gate



Functions

Unit unlocks and opens or closes and locks a single door from a set of remote push buttons: OPEN-CLOSE-STOP.

The bi-parting G Operator is manually locked or unlocked at the door by a cremone bolt located in the gates. The gates may then be operated from a remote set of push buttons: OPEN-CLOSE-STOP.

In event of emergency or power failure, doors may be mechanically unlocked by prison paracentric key and hand cranked to open or closed position.

Gate movement may be stopped in mid-travel and restarted in the desired direction by pressing the appropriate push button.

NOTE: When closed, it is impossible to move the gate except by electrical or mechanical methods.

Applications

G Operators are applicable to any exterior entrance for passenger vehicles or trucks.

Standard Features

- Motor voltage – 120/208 VAC.
- Rugged chain drive – Provides consistent action of the door under a variety of conditions and installation variables.
- Heavy duty construction – G Operators offer welded steel construction and rugged components for durability in exterior applications.
- Self-supporting – Heavy columns and beams combine to make the structure self-supporting.
- Control station – Three push buttons (OPEN-CLOSE-STOP) provide remote operation. Red and green indicator lights show open and closed condition (respectively) of gates.
- Interlock feature – Two or more operators may be electrically interlocked so that only one may be unlocked and operated at a time.
- Emergency mechanical operation – In event of power failure unlocking the column provides access to the release mechanism. The door may then be opened by hand crank.

Optional Features

- Custom graphic consoles – In many cases, operators are merely one part of a complete security system. For these larger installations, or those with particular needs, custom-built consoles or touchscreen controls may be easily provided with floor plan and special feature graphics.



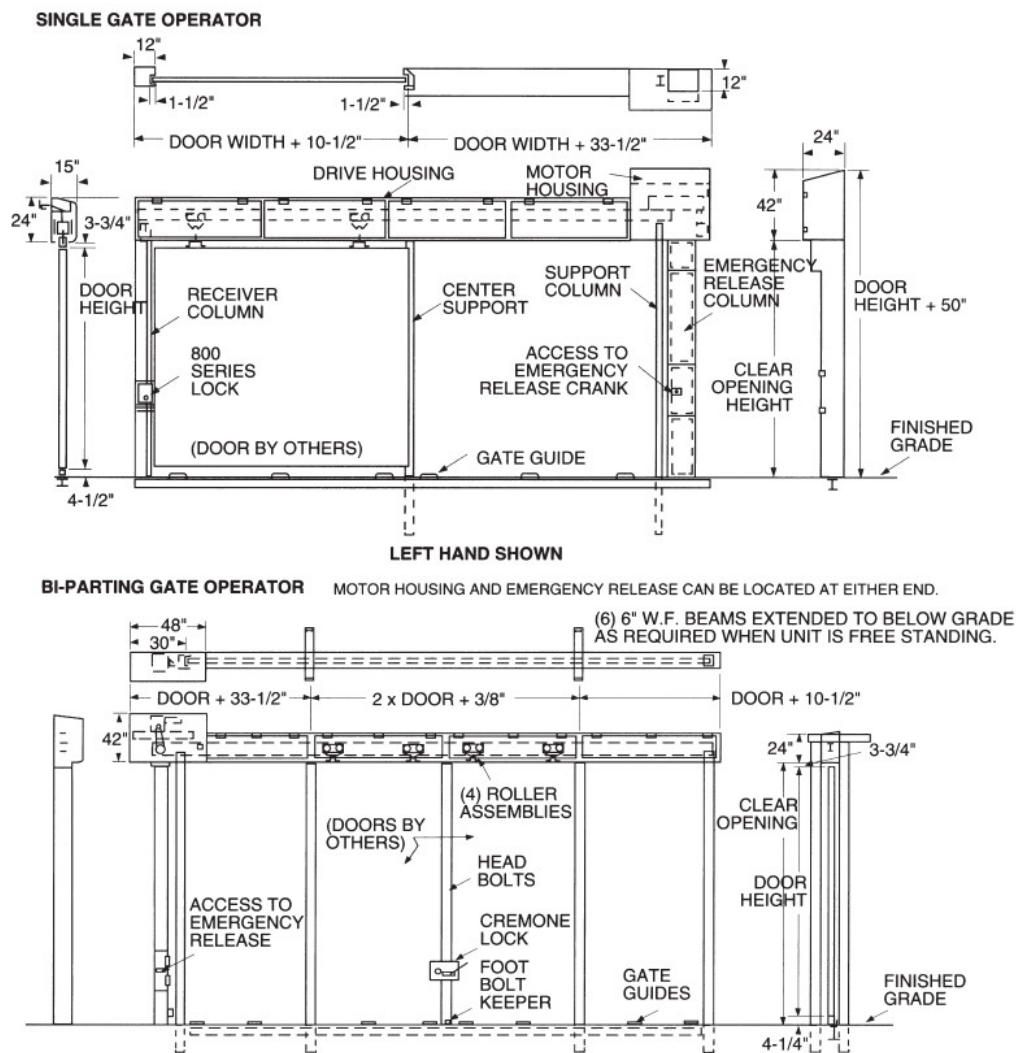
Locking Devices

G Operators Sliding Fence Gate

Locking System

Single Door Model: Secured by an 800 Series lock located in a column at the front of the door. (See Electric Lock Section for details.)

Bi-parting Door Model: Secured by cremone bolts operated by prison paracentric key. (See Mechanical Lock Section for details.)



Note: Dimensions are for information and planning purposes only, and should not be used as templates.

The illustration shown is intended for general information and planning purposes only. Folger Adam locking devices are fabricated to the design of the facility.



For More information please call 210-533-1231

Locking Devices

G Operators Sliding Fence Gate

Specifications

Unlocking System Type	Roller Chain
Motor	120/208 VAC, 60 HZ, 1-1/2 HP.
Roller Chain	#60 size.
Trolley Hangers	3 ton capacity
Locking Column	7-gauge steel plate construction with swinging type door equipped with two #3 hinges, and secured by an 80 Series Deadlock.
Mechanism Housing	7-gauge steel.
Housing Covers	7-gauge steel plate.
Gate Guides	5" I-beam with forged and welded steel guides.
Finish	USP except track, rollers and drive mechanism.
Trolley Track	8" I-beam x 23 pounds.
Support Beams	6" WF beam x 20 pounds.

Note: Dimensions are for information and planning purposes only, and should not be used as templates.

The illustration shown is intended for general information and planning purposes only. Folger Adam locking devices are fabricated to the design of the facility.

