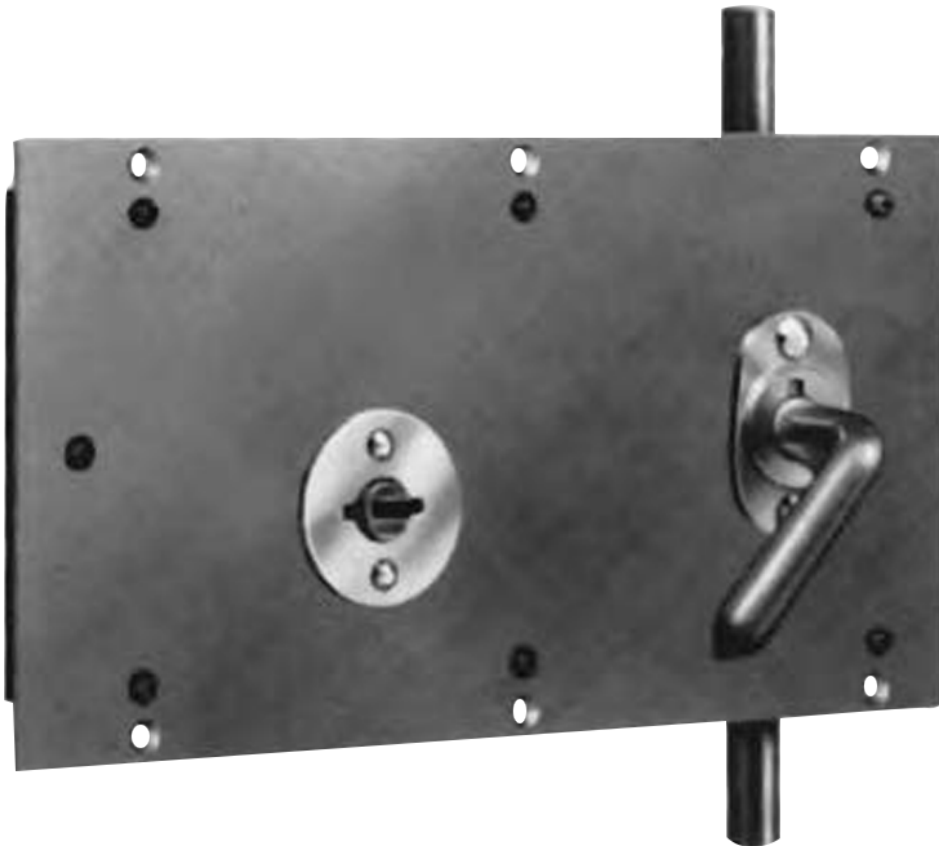


# 3600 and 3800 Cremone Bolts



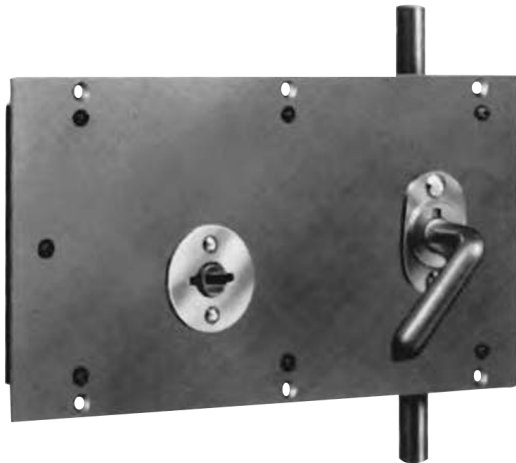
# Folger Adam



For More information please call 210-533-1231

# Mechanical Locks

## 3600 and 3800 Cremone Bolts



### Standard Features

- Large solid bolt – Zinc plated steel, 2" x 3/4". Flush when retracted.
- Bolt throw – 3/4" at all three points.
- Investment-cast key cylinder – One-piece bronze alloy with paracentric keyway.
- Rugged lever handles – Steel handles and escutcheons on both sides.
- Supplied – with head and foot bolts, foot bolt receptacle(s), Escutcheon(s), and necessary mounting screws.
- Finish – Zinc plated.

### Applications

Cremone locks are designed for maximum security on corridor, entrance, or armory doors which may be subject to mass attack. Specify for use with hollow metal or grille doors. Specify handing.

### Standard Features

- Series 3600 mechanical operation – Active door unlocks with a half-turn of the key. A full turn of the key in the opposite direction, deadlocks the center latchbolt, which also deadlocks the head and foot bolts.
- Series 3800 mechanical operation – Active door is operated by a key which deadlocks the deadbolt, head and foot bolts. Inactive door is operated from its own cylinder which deadlocks head and foot bolts.
- Lever handle operation – Head and foot bolts are operated by the handles, except when they are in deadlocked condition.
- Door types – Models available for use with 2" or thicker grille doors plug welded to flat, horizontal bars. In hollow metal doors 1-3/4" thick or more, bolt set mounts in a pocket with head and foot bolt concealed within door. (Specify door thickness when ordering.)
- Head and foot bolts – 7/8" diameter steel. (Specify overall door opening height when ordering.)
- Durable case and cover – 7 gauge steel.
- Corrosion resistance – Working parts are corrosion resistant.
- Heavy-duty lever tumbler – 5 spring-temper brass tumblers, activated by heavy phosphor bronze springs. Precision fit to locking fence.

3620 Keyed one side  
3660 Keyed both sides  
3820 Keyed one side  
3860 Keyed two sides

For More information please call 210-533-1231

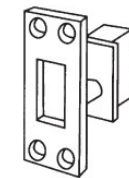
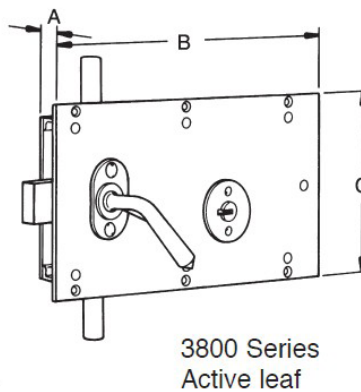
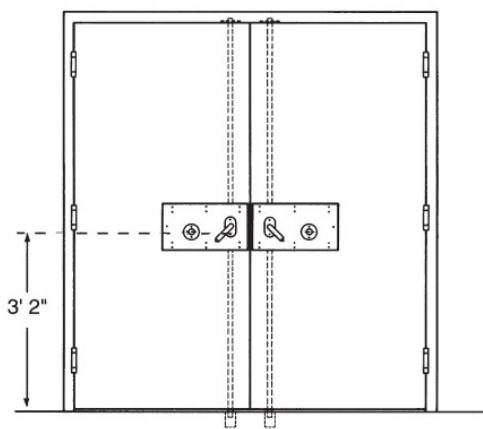


# Mechanical Locks

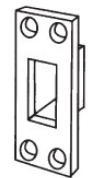
## 3600 and 3800 Cremone Bolts

### Accessories

- 60/80-4B – Mortise center bolt keeper and mounting screws for single door only.
- 60/80-4BL – Mortise center bolt keeper with switch and mounting screws for single door only.
- 60/80-4DB – Mortise center bolt keeper with dustbox and mounting screws for single door only.
- 3S-4B – Mortise head bolt keeper and mounting screws for single or double doors.
- 3S-4BL – Mortise head bolt keeper with switch and mounting screws for single or double doors.
- 3S-FBR – Additional foot bolt receptacle may be used for hold-open position.



60/80-4BL

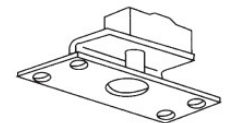


60/80-4DB

60 Series have strike lips.



3S-FBR



3S-4BL

### Model Selection Chart

Model	Description	Keyed	Door Type
36/3821G	Singled	One Side	Grille
36/3822G	Double	One Side	Grille
36/3861G	Single	Two Sides	Grille
36/3862G	Double	Two Sides	Grille
36/3821HM	Single	One Side	Hollow Metal
36/3822HM	Double	One Side	Hollow Metal
36/3861HM	Single	Two Sides	Hollow Metal
36/3862HM	Double	Two Sides	Hollow Metal

Note: Dimensions are for information and planning purposes only, and should not be used as templates.



For More information please call 210-533-1231

# Mechanical Locks

## 3600 and 3800 Cremone Bolts

Specify circled swing number when ordering.

### 3600 SERIES LATCHBOLT AND 3800 SERIES DEADBOLT CREMONES For Single and Double Doors

#### REMOVABLE COVER STOP SIDE

KEYED BOTH SIDES	(78) 3861 3661 LH LHRB	DEADBOLT LATCHBOLT	RH RHRB (79)
KEYED STOP SIDE	(82) 3821 3621 LH LHRB	DEADBOLT LATCHBOLT	RH RH (83)
KEYED BOTH SIDES	(86) 3862 3662 LH LHRB	DEADBOLT LATCHBOLT	ACTIVE ACTIVE
KEYED BOTH SIDES	(88) 3862 3662 RH RHRB	DEADBOLT LATCHBOLT	ACTIVE ACTIVE
KEYED STOP SIDE	(90) 3822 3622 LH LHRB	DEADBOLT LATCHBOLT	ACTIVE ACTIVE
KEYED STOP SIDE	(92) 3822 3622 RH RHRB	DEADBOLT LATCHBOLT	ACTIVE ACTIVE

A INDICATES ACTIVE SIDE

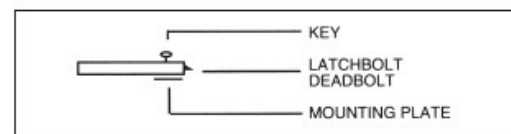
#### REMOVABLE COVER HINGE SIDE

KEYED BOTH SIDES	(80) 3861 3661 RH RHSB	DEADBOLT LATCHBOLT	LH LHSB (81)
KEYED HINGE SIDE	(84) 3821 3621 RH RHSB	DEADBOLT LATCHBOLT	LH LHSB (85)
KEYED BOTH SIDES	(87) 3862 3662 RH RHSB	DEADBOLT LATCHBOLT	ACTIVE ACTIVE
KEYED BOTH SIDES	(89) 3862 3662 LH LHSB	DEADBOLT LATCHBOLT	ACTIVE ACTIVE
KEYED HINGE SIDE	(91) 3822 3622 RH RHSB	DEADBOLT LATCHBOLT	ACTIVE ACTIVE
KEYED HINGE SIDE	(93) 3822 3622 LH LHSB	DEADBOLT LATCHBOLT	ACTIVE ACTIVE

A INDICATES ACTIVE SIDE

NOTE: The above illustrations show latchbolts for all models. 3800 Series are deadbolt locks, 3600 Series are latchbolt locks.

#### LEGEND



For More information please call 210-533-1231

