

## DOOR MOUNTED FOR SMALL SWINGING DOORS

Maximum security.

## 1010A DEADLOCK

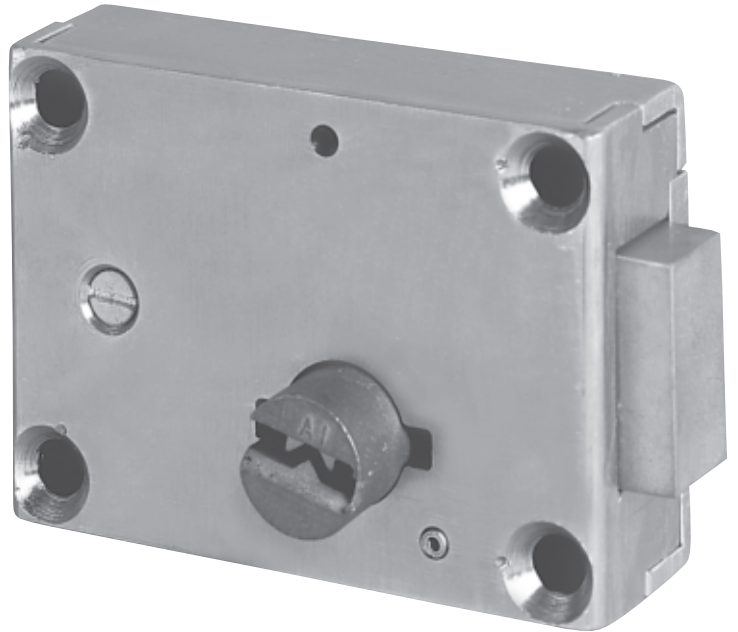
1010A-1: KEYED ONE SIDE  
1010A-2: KEYED BOTH SIDES

### APPLICATION:

For small swinging doors on access panels, plumbing chases, control cabinets, etc.

### FUNCTION:

Key activated locking and unlocking.



## DOOR MOUNTED FOR SMALL SWINGING DOORS

Maximum security.

### STANDARD FEATURES:

- Mechanical deadlock
- Six heavy-duty tumblers
- Mounting fasteners

### OPTIONAL FEATURES:

**EXTENDED BOLT** - Used for stop side mounting. Specify "1-1/4".

**HOLLOW METAL MOUNTING** - Used for hollow metal door application. Specify "HM." (See page G17)

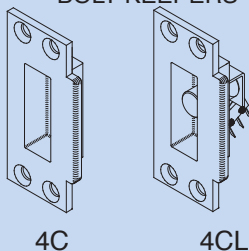
**GRATING DOOR MOUNTING** - Used for grating door application. Specify "G." (See page G17)

**PLATE DOOR MOUNTING** - Used for steel plate door application. Specify "P." (See page G17)

**BOLT KEEPER OPTIONS** - (Must be specified separately):  
4C - Bolt keeper with dustbox  
4CL - Bolt keeper with switch

**NOTE:** All bolt keepers are supplied with security fasteners.

#### BOLT KEEPERS

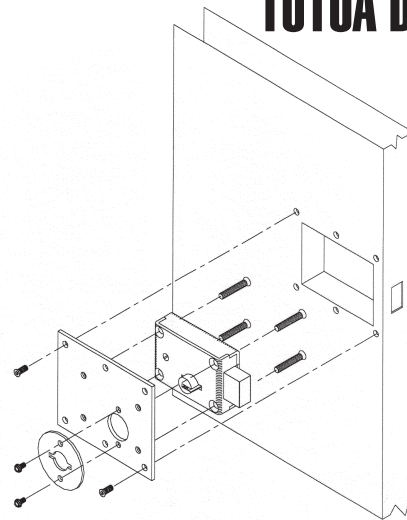


#### HOW TO ORDER:

Specify:

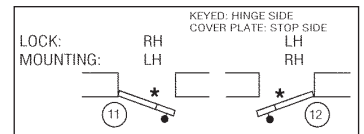
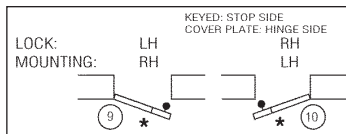
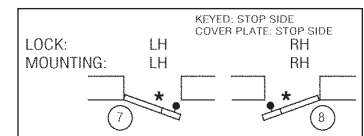
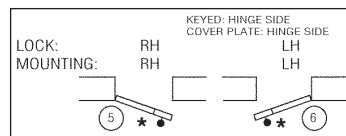
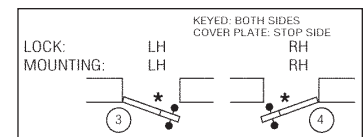
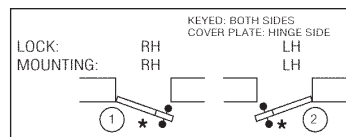
1. Quantity
2. Swing chart number (handing)
3. Bolt projection
4. Application (HM, G, P)
5. Key code instruction
6. Bolt keeper requirements

## 1010A DEADLOCK



HM Mounting Shown

**Swing Chart:** Specify circled swing number when ordering.



\* Indicates lock mounting/access plate side.

### TECHNICAL DATA:

- **STANDARD FINISH:** Galvanized
- **COVER:** Steel
- **CASE:** Steel
- **LOCKBOLT:** Steel
- **PARACENTRIC CYLINDER:** Silicon bronze/copper alloy
- **TUMBLERS:** Spring tempered brass. Tumblers actuated by phosphor bronze springs, six tumblers per lock
- **LOCK SIZE:** 4.4" L x 3.15" H x 1.35" TK
- **LOCK WEIGHT:** 4.5 lbs.
- **LOCKBOLT SIZE:** 1-1/2" H x 3/4" TK
- **LOCKBOLT THROW:** 5/8"
- **ASTM F1577 Certified Impact Test-Grade 1**

